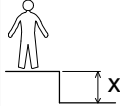
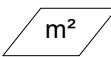




N°		
1	<0.6 m	17 m ²

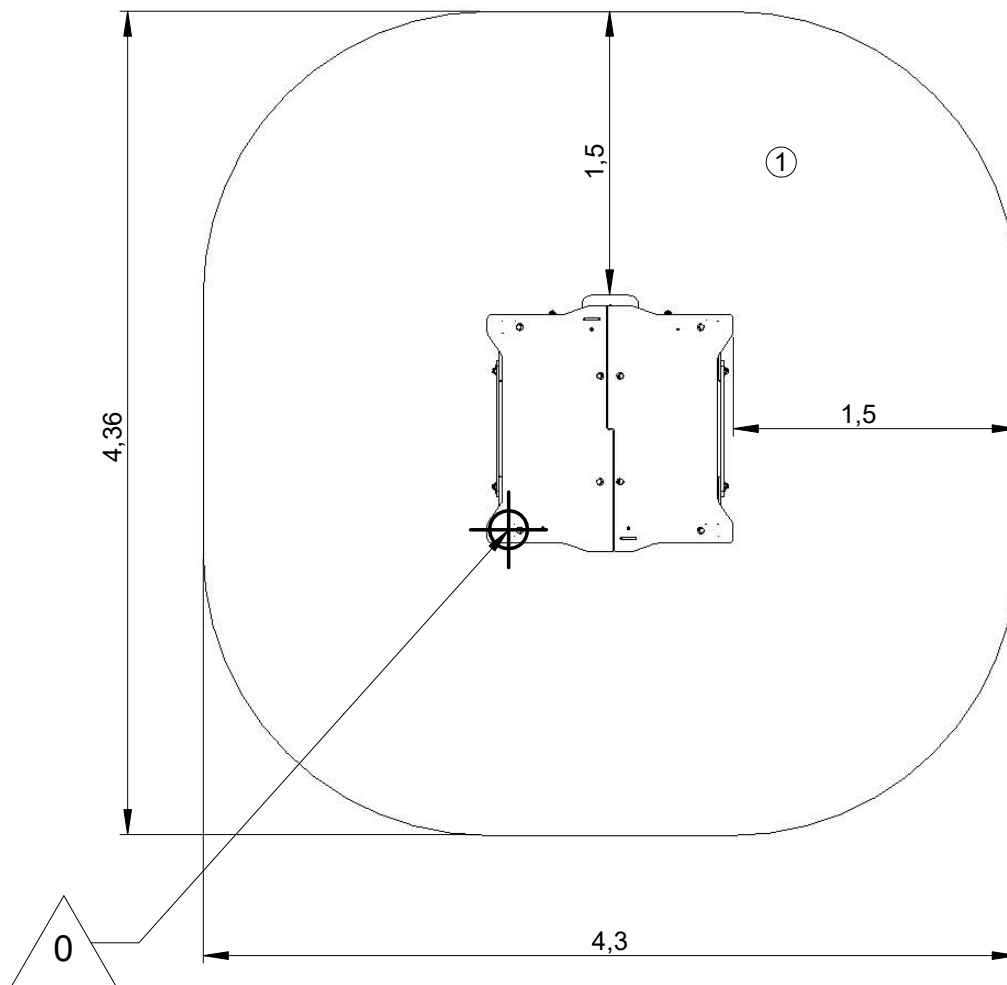
— Zone d'impact
Impact area
Area de impacto
Fallraum
Valzone

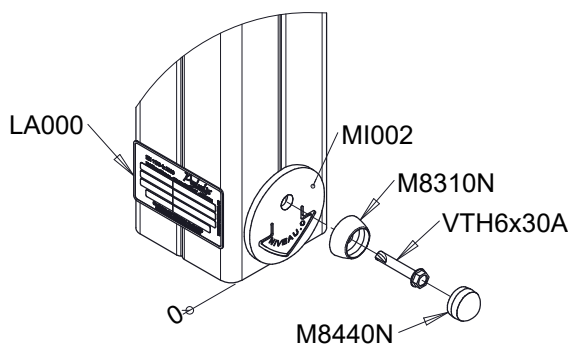
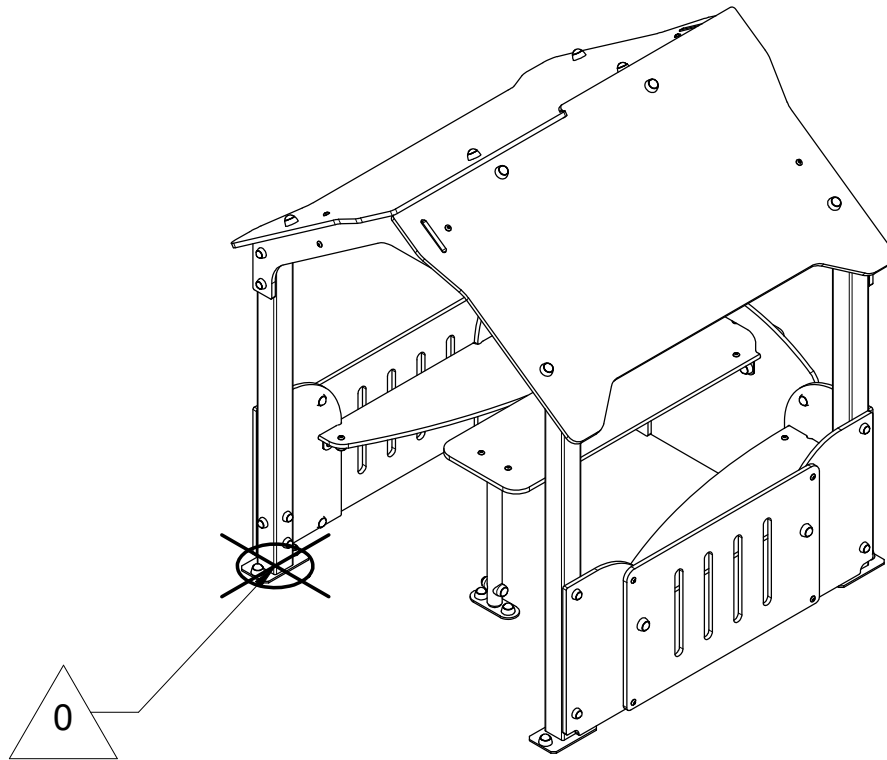


Point de référence
Setting out point
Punto de referencia
Bezugspunkt
Referentiepunt

- - - Espace libre
Free space
Espacio libre
Freiraum
Vrije ruimte

EN1176-1:2017

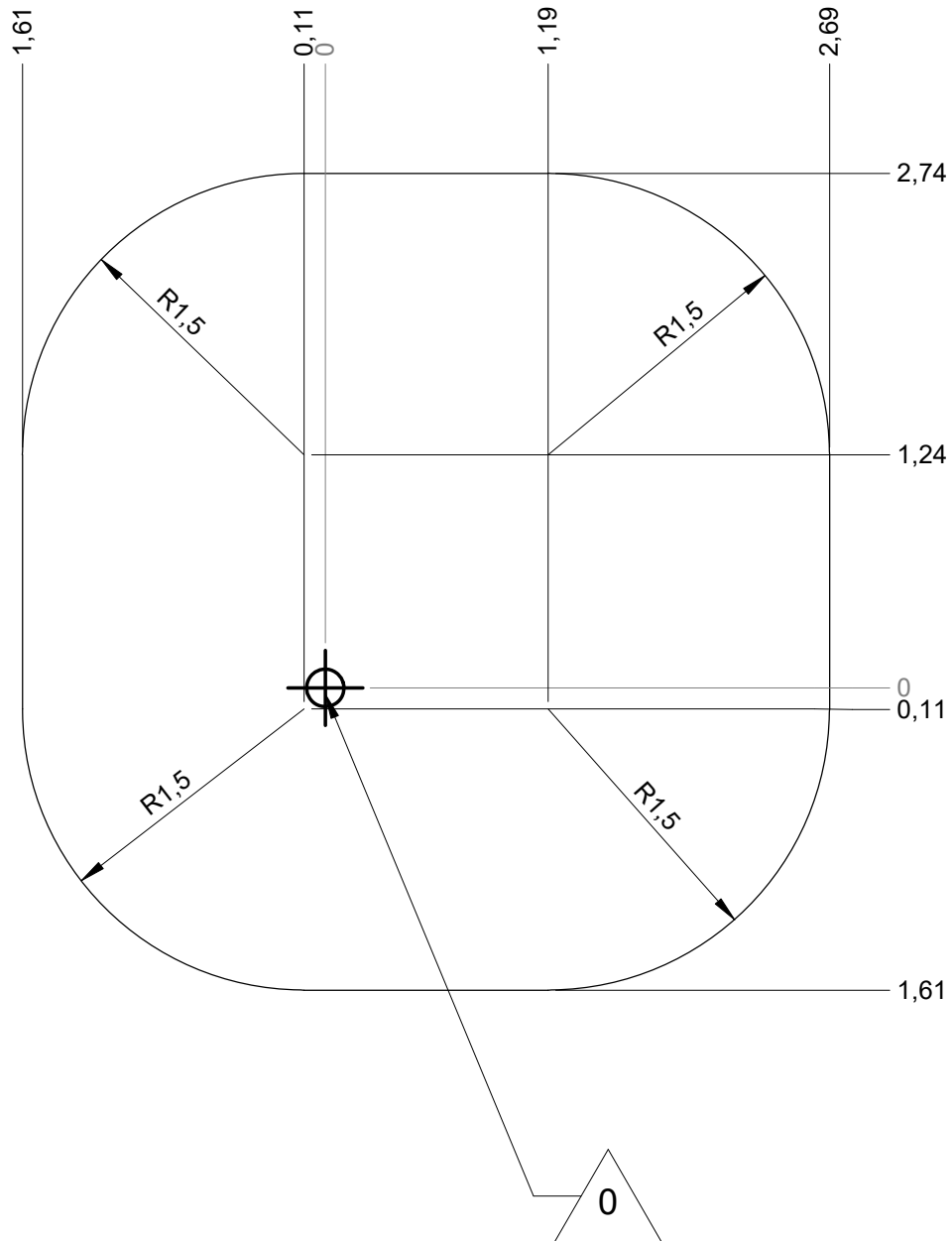




Réf	Qté
G250B	1
G253	2
G265	2
G274	1
G294B	1

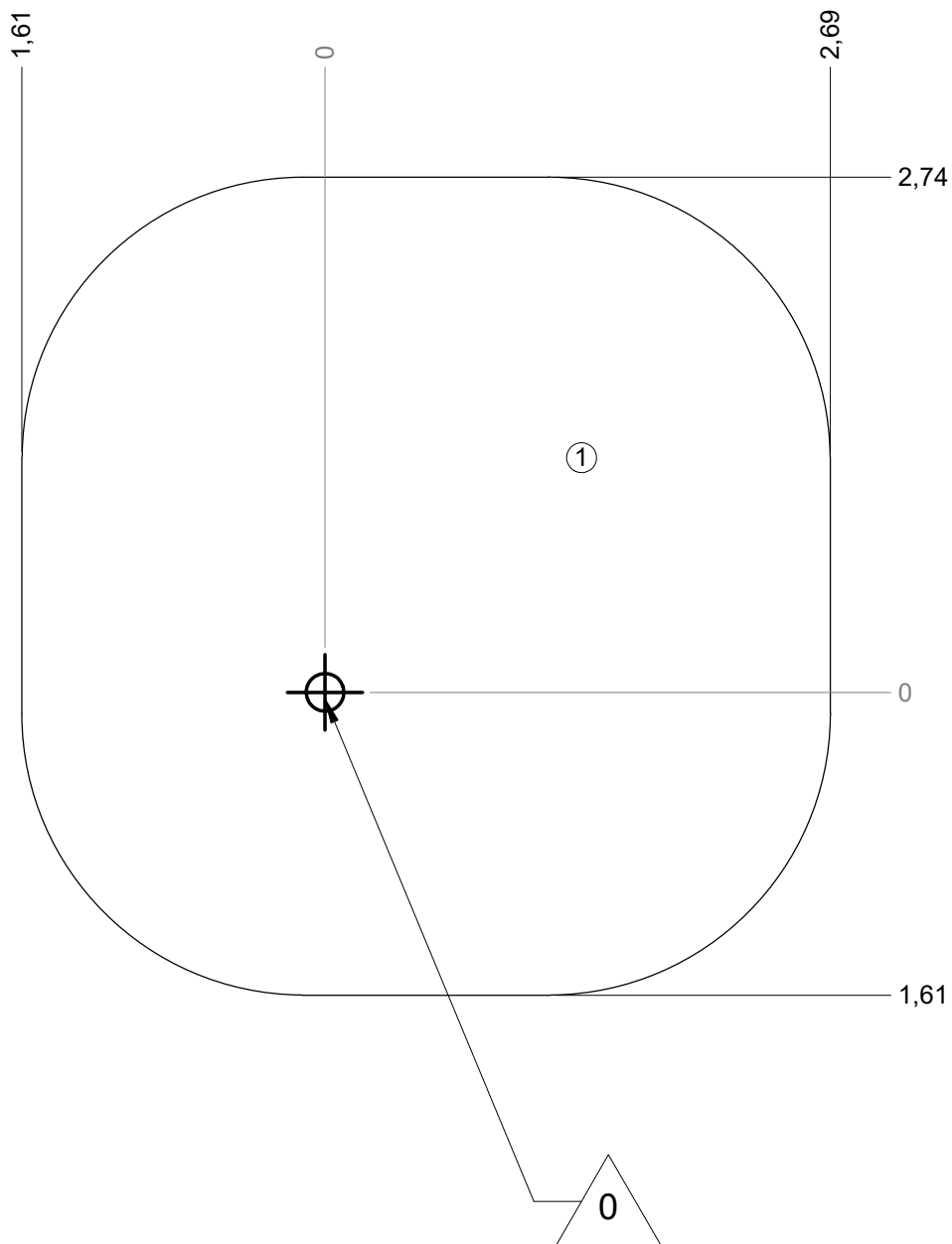
— Zone d'impact
 Impact area
 Area de impacto
 Fallraum
 Valzone

17 m²



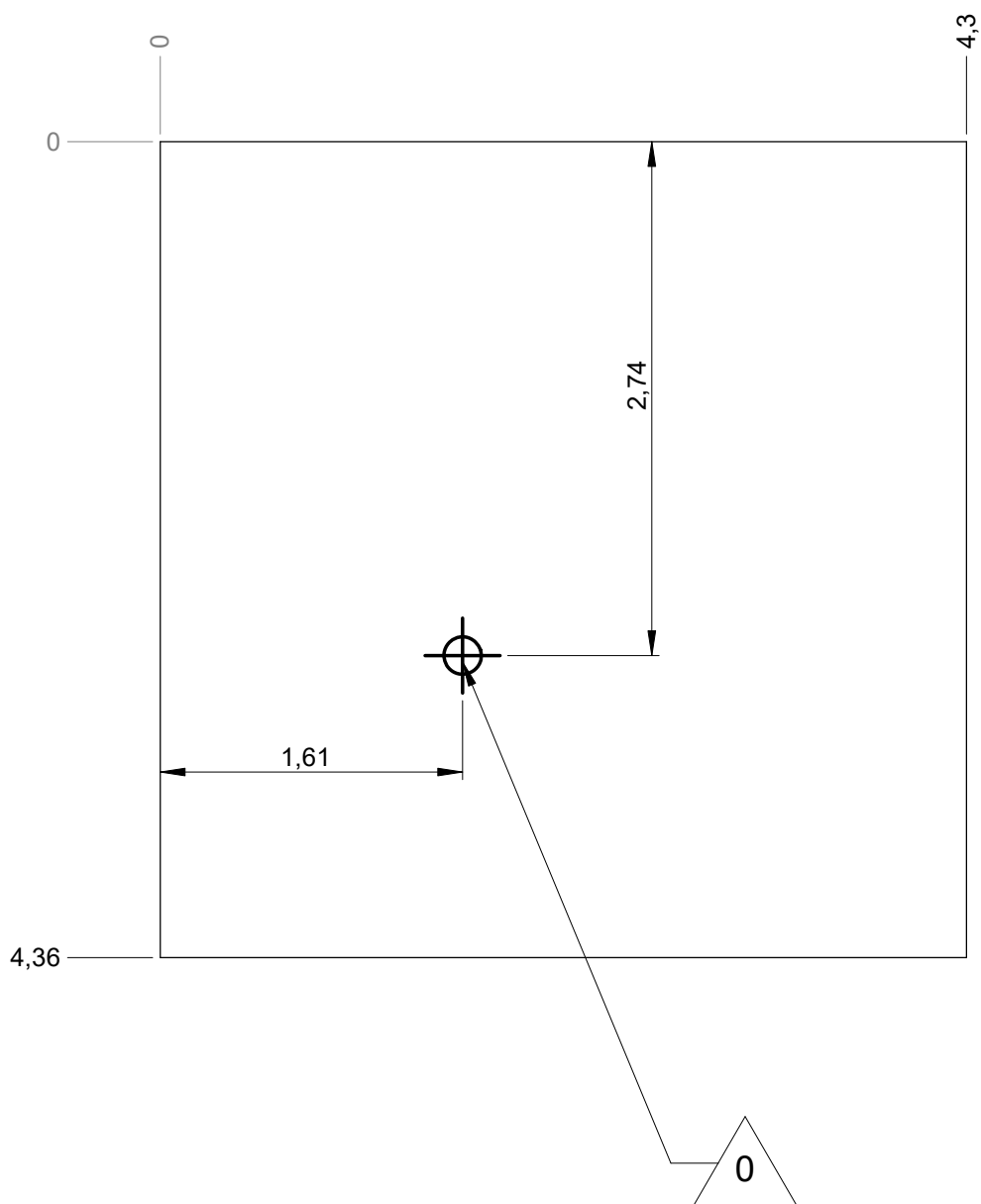
— Sol souple
Wetpour
Caucho continuo
Synthetischer Fallschutz
Gietvloer

17 m²

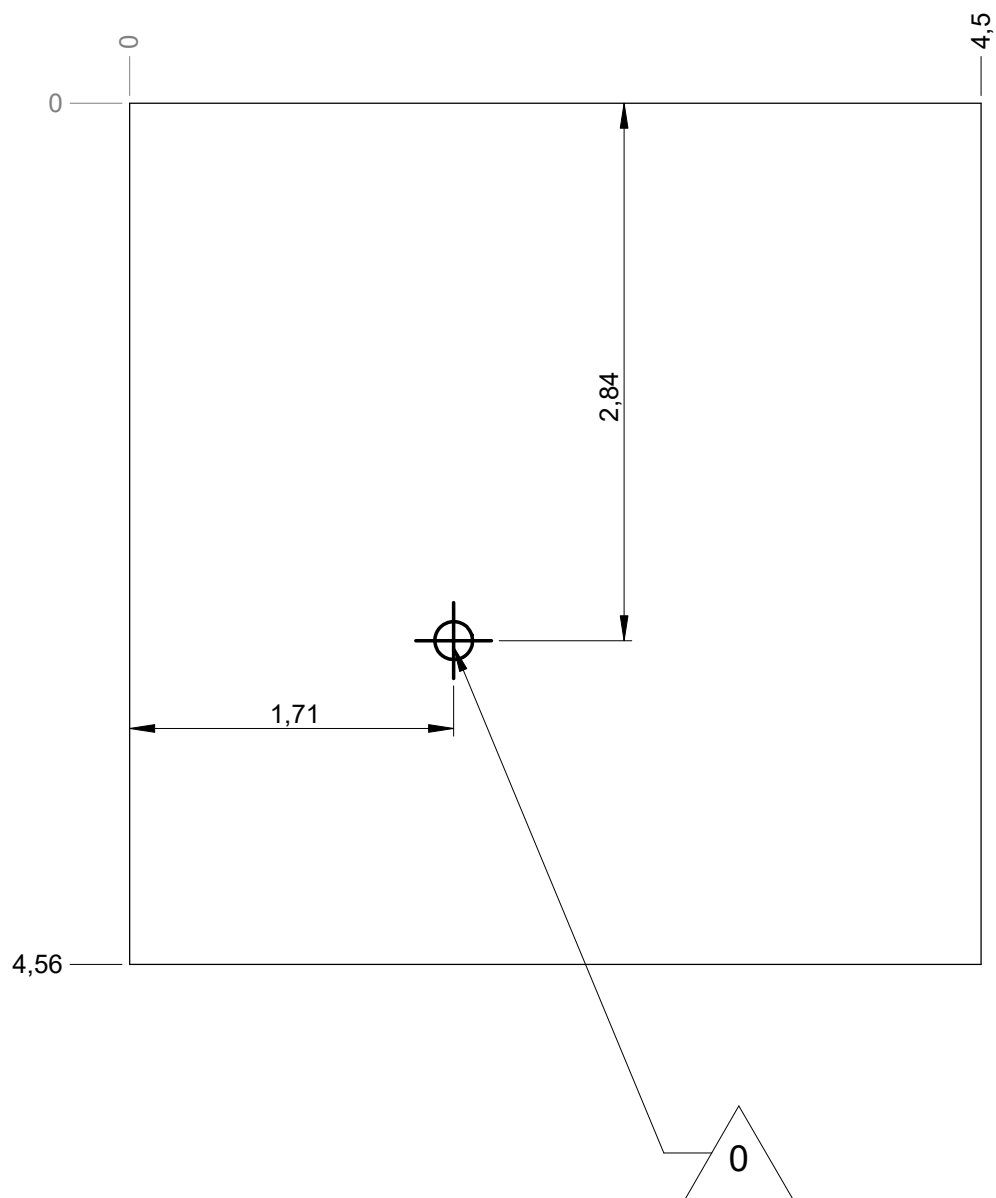


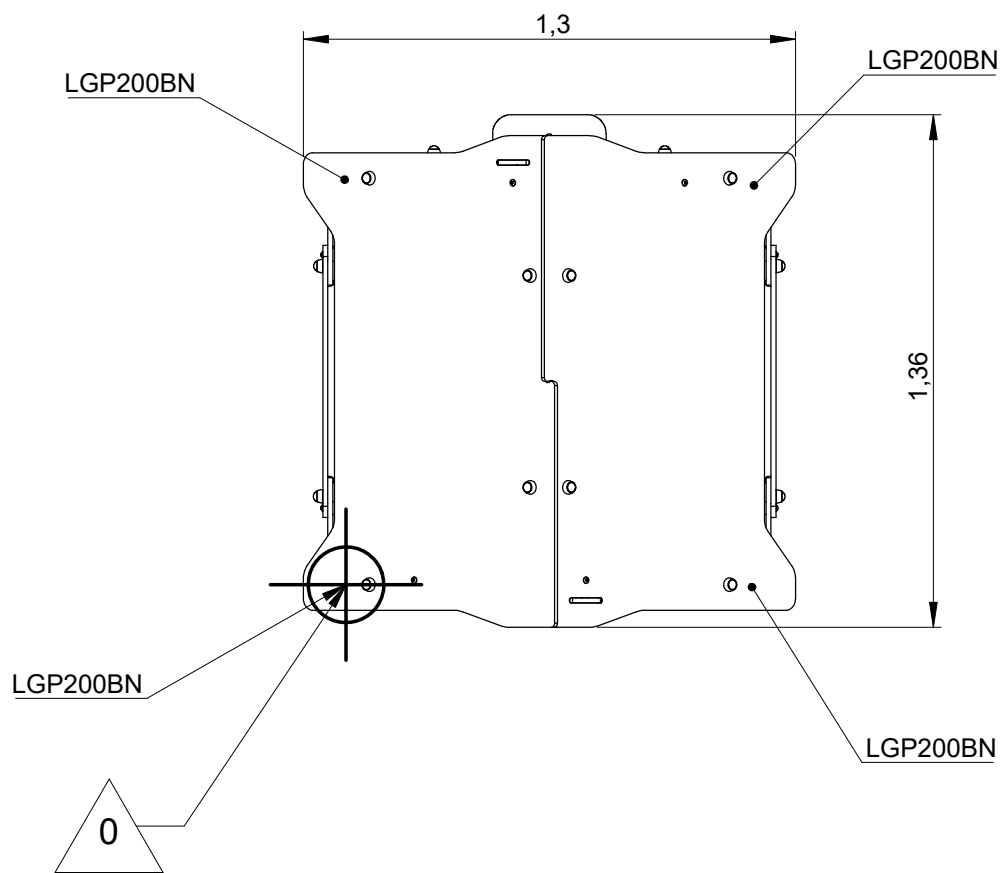
— Dalle béton
Concrete pad
Solera de hormigon
Beton Bodenplatte
Betonnen bodemplaat

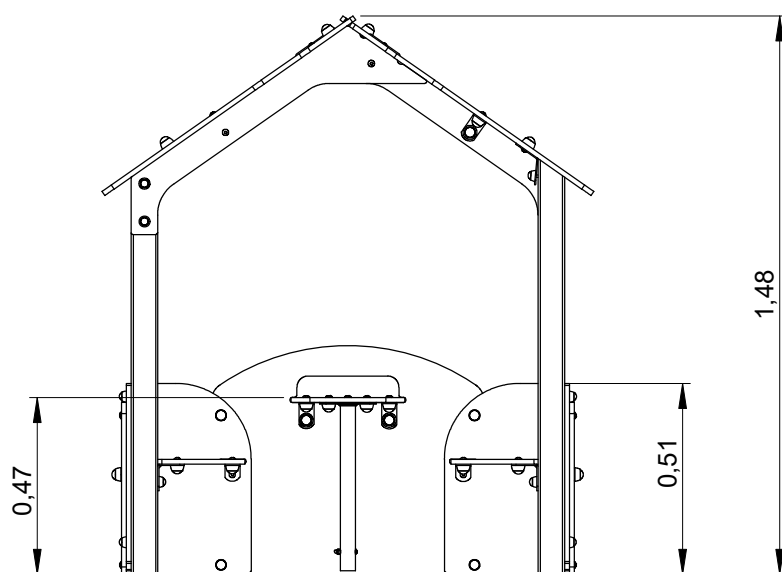
18 m
19 m²



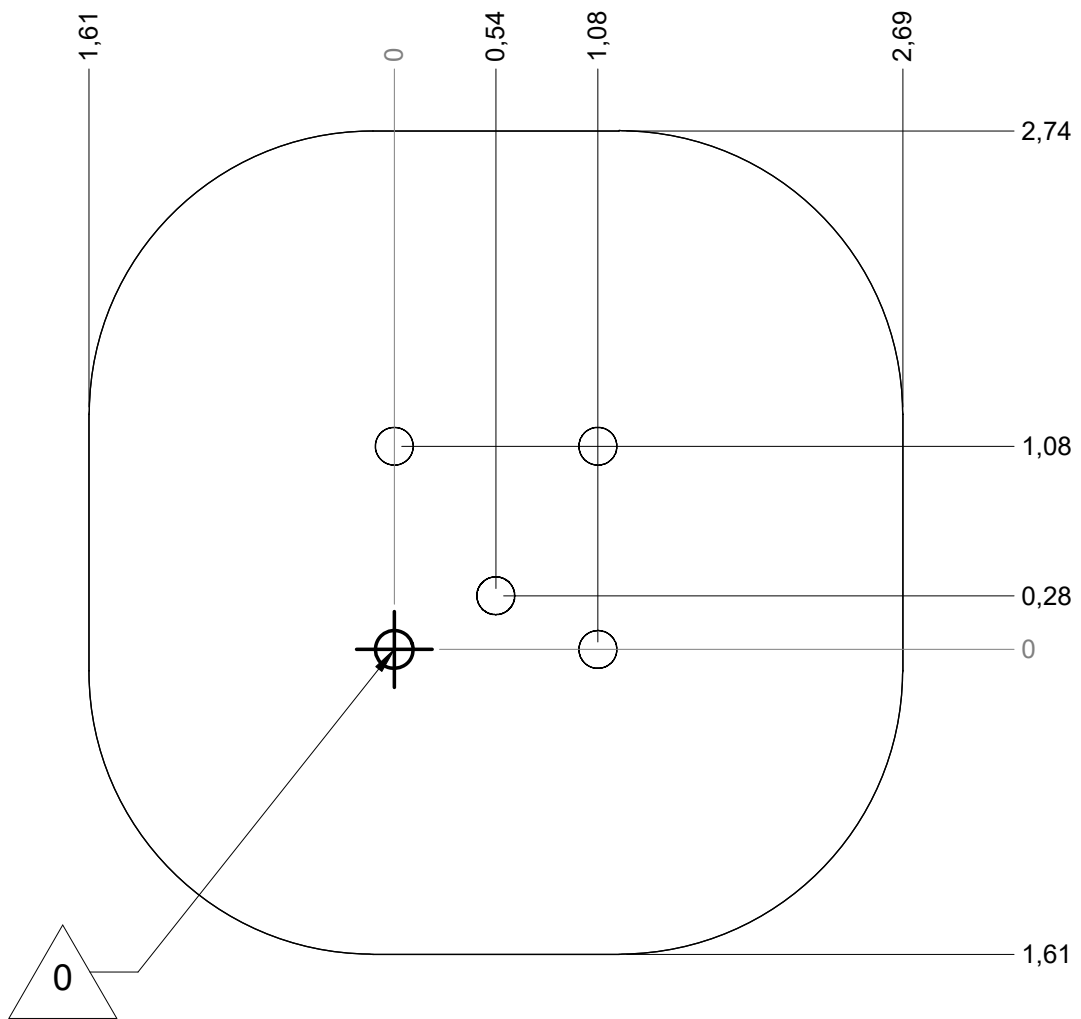
—	Sol fluent	
	Loos partucule material	19 m
	Arenero	
	Loses Bodenmaterial	21 m²
	Los bodemmaterial	






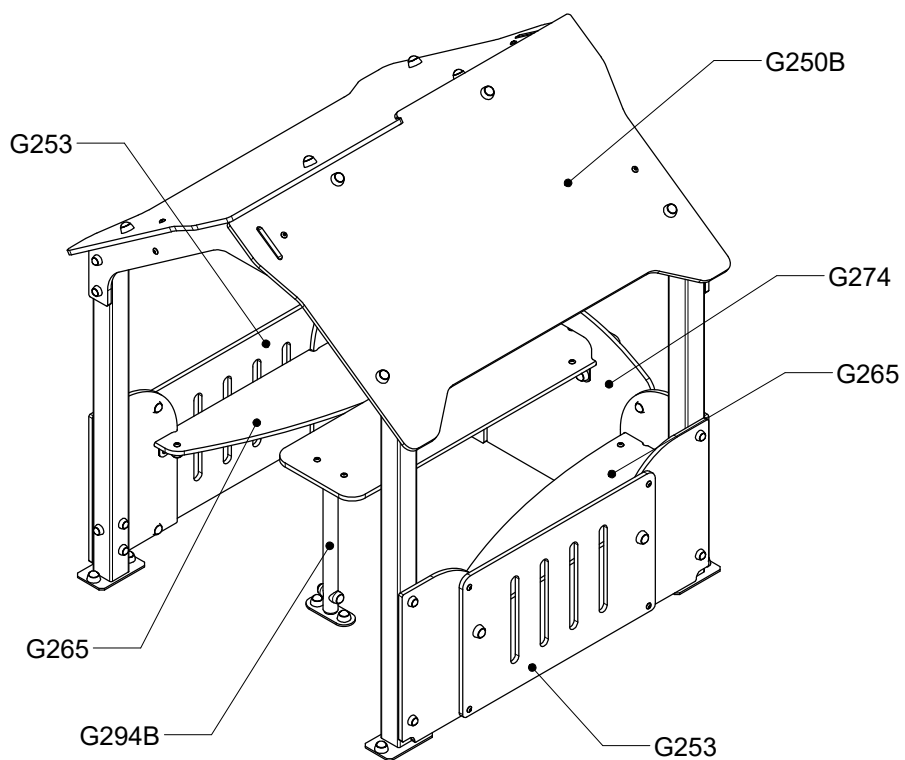




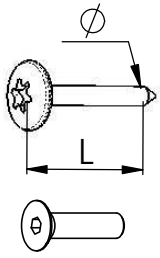
Implantation
 Footing plan
 Implantación
 Fundamentplan
 Funderingstekening



 <p>x2</p>	 <p>2H</p>	 <p>RD14M10</p>
--	---	--

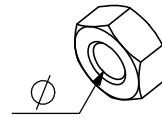


Réf	Qté
G250B	1
G253	2
G265	2
G274	1
G294B	1

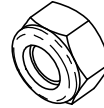


VBT 6 x 30
 \varnothing L (mm)

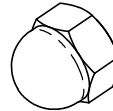
VFHC



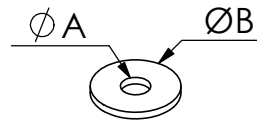
VEC M10
 \varnothing



VEF



VEB

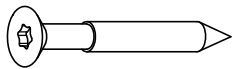


VR6x18
 $\varnothing A$ $\varnothing B$

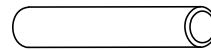
VTHA

1000 - 1800 RPM
 Vitesse de rotation
 Rotation speed

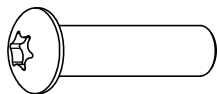
< 14 N.m
 Couple de rupture
 Breakage torque



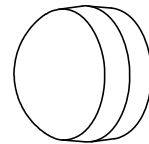
VWT



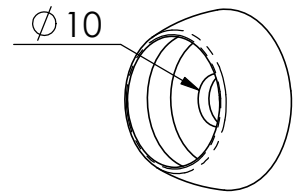
VGC



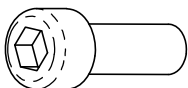
VCBHC



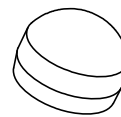
M10 440N



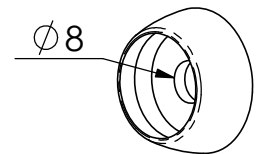
M10 310 N



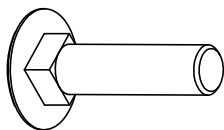
VBTR



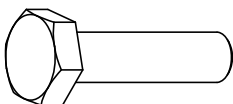
M8440N



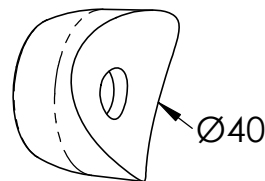
M8310N



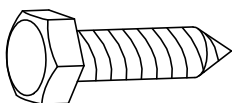
VTRCC



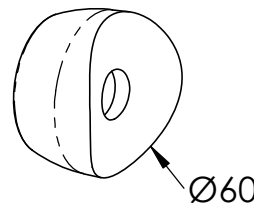
VTH



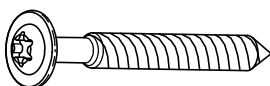
MI2503



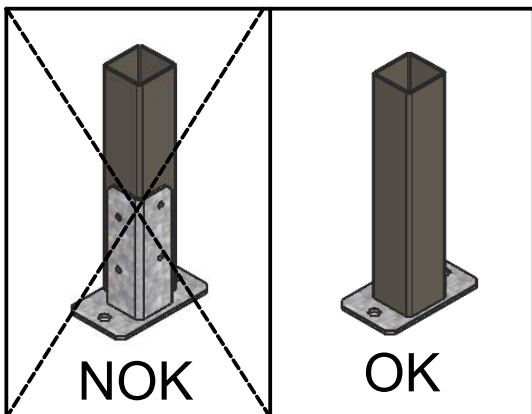
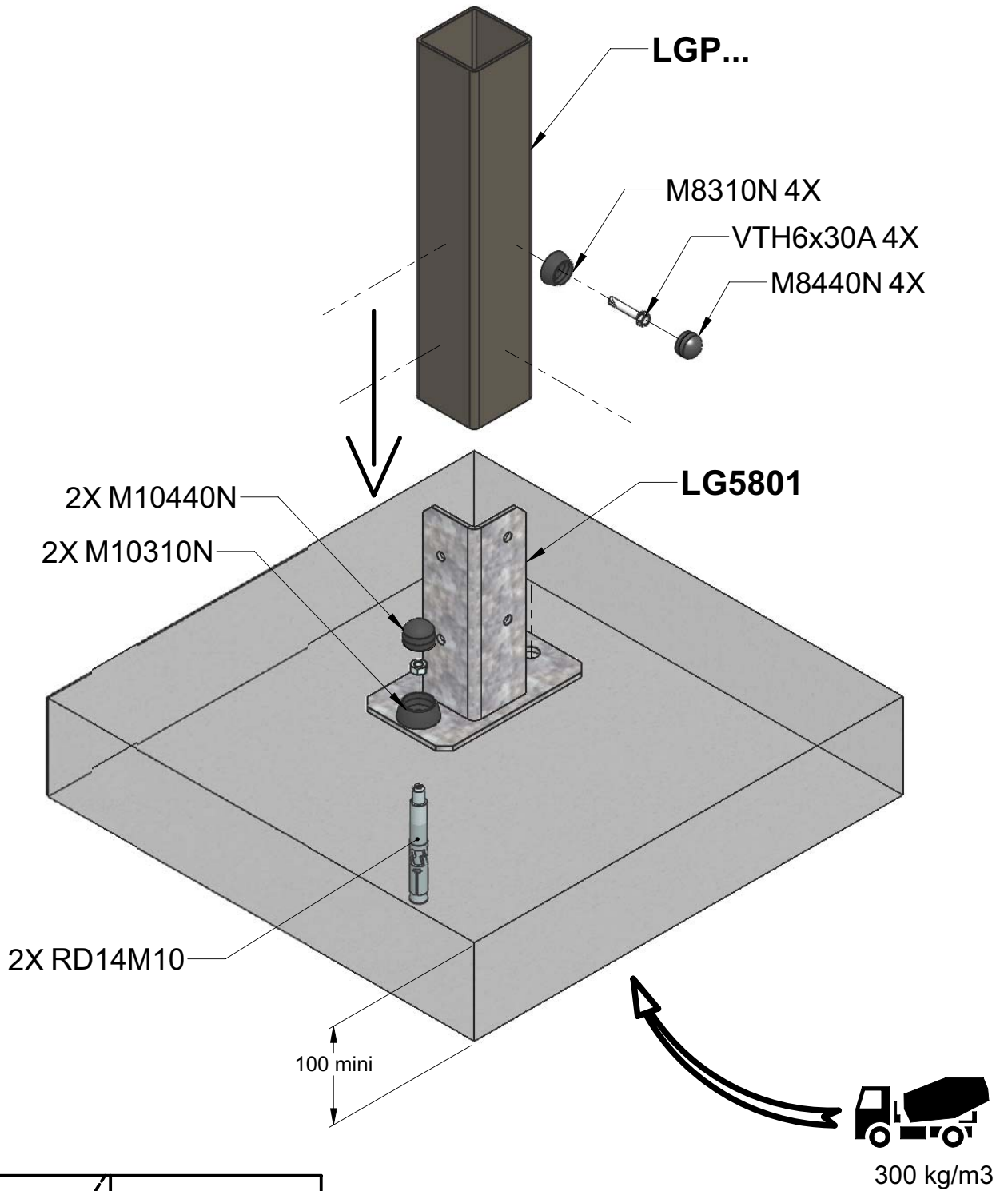
VTF

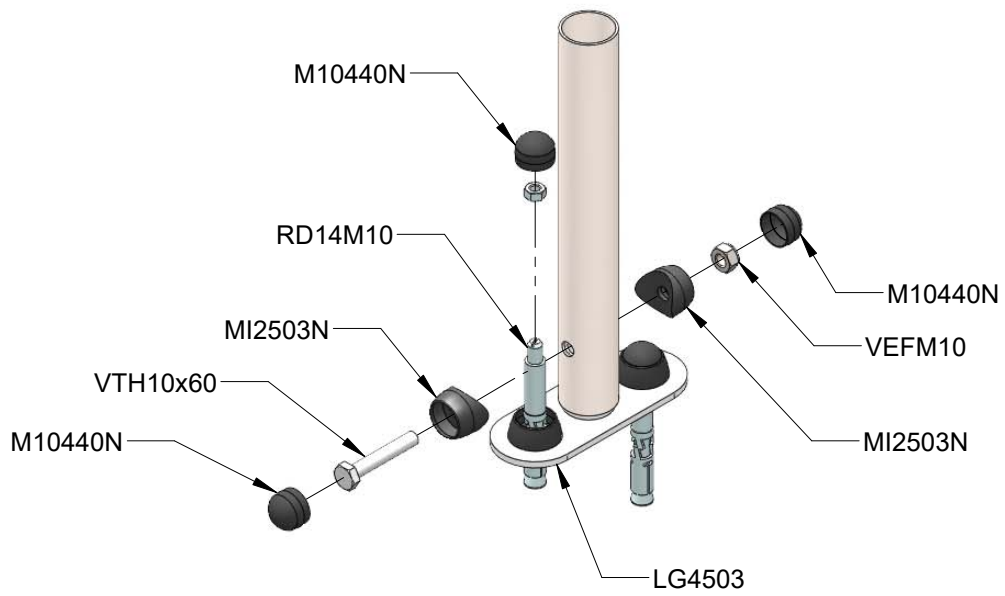


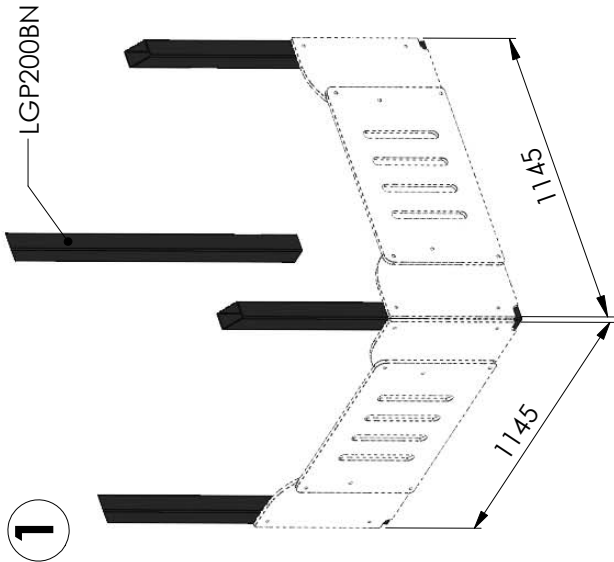
MI2701



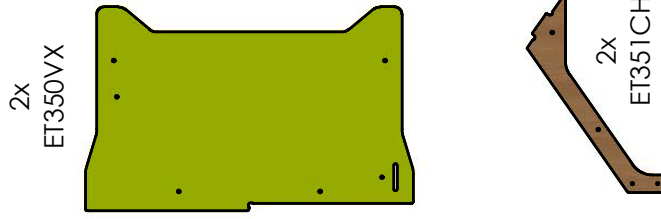
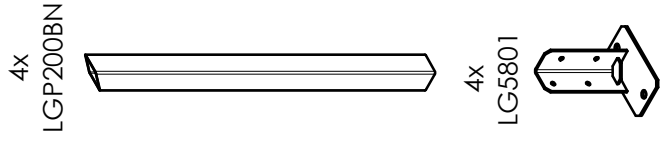
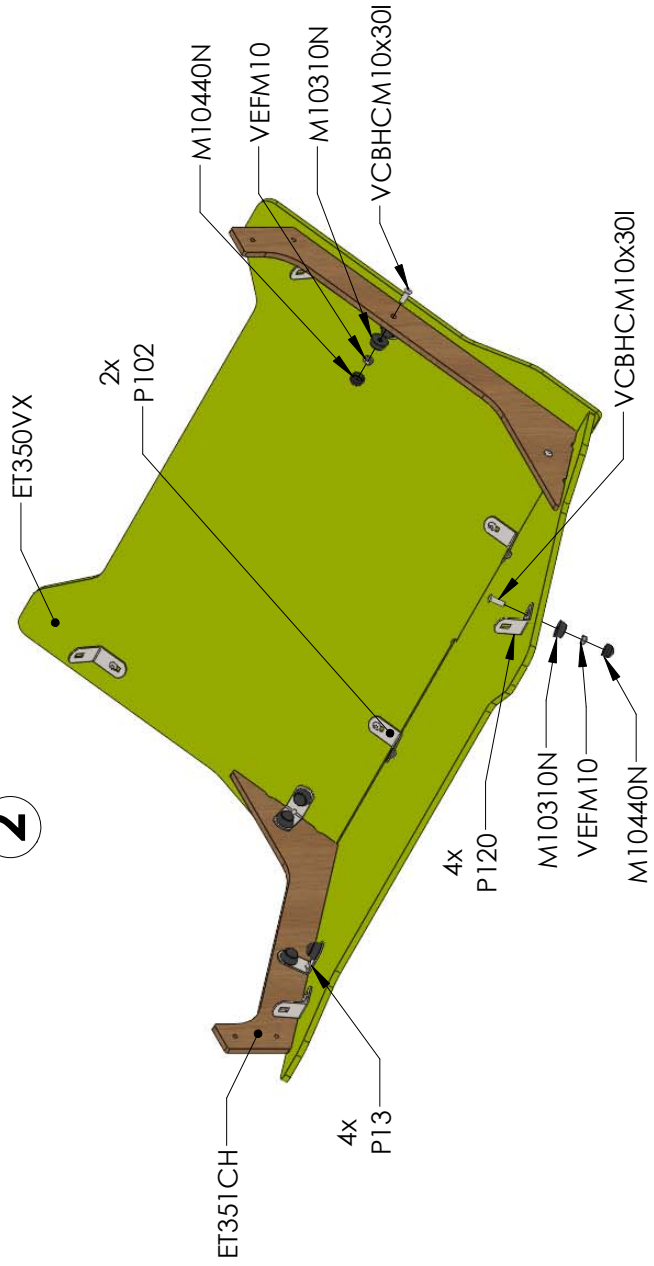
VBT





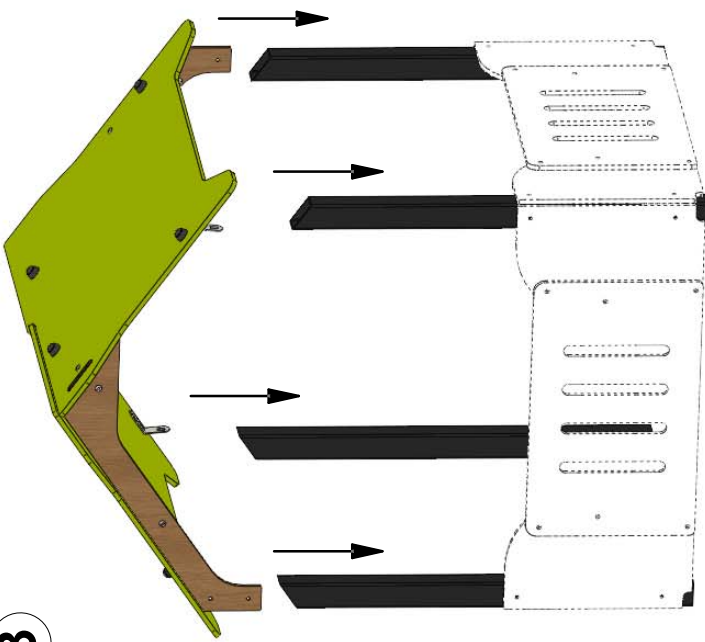


2



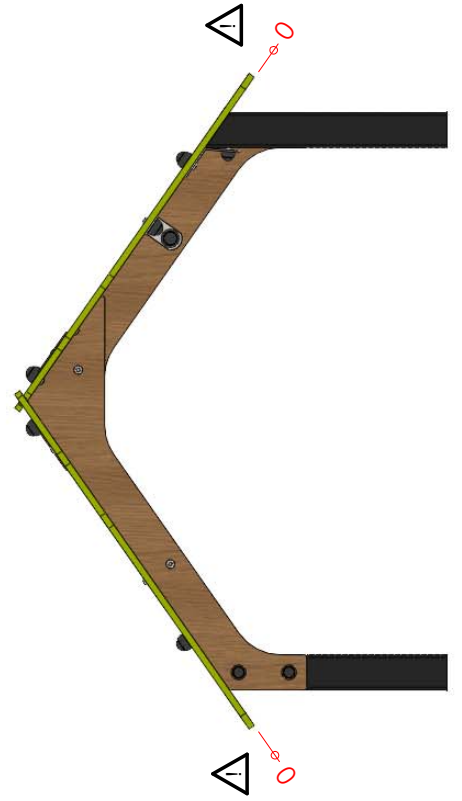
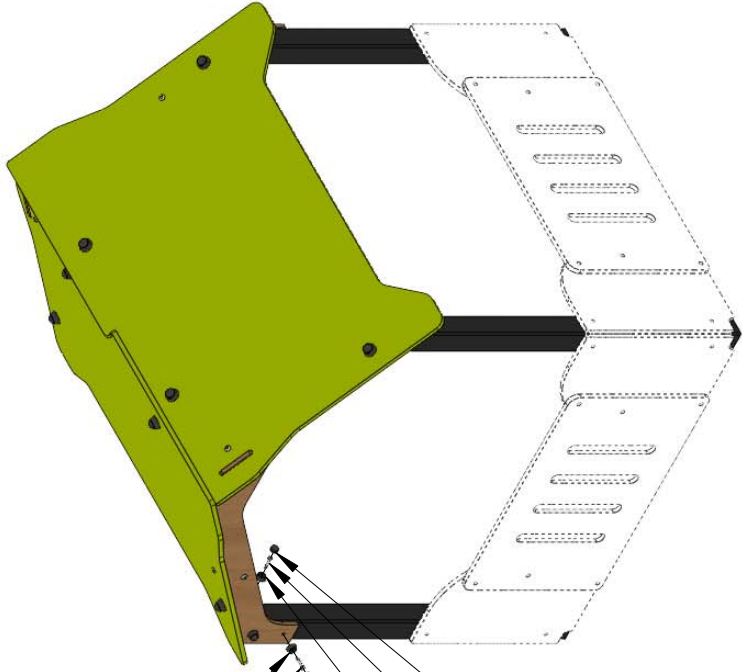
Réf	Qté
ET350VX	2
ET351CH	2
LG5801	4
LGP200BN	4
M8310N	20
M8440N	20
M10310N	24
M10440N	24
P13	4
P102	2
P120	4
RD14M10	8
VCBHCM10x30I	16
VEFM10	16
VTH6x30A	20

3

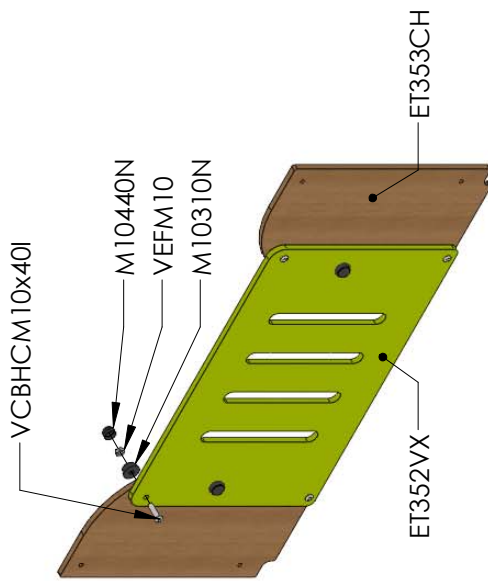


4

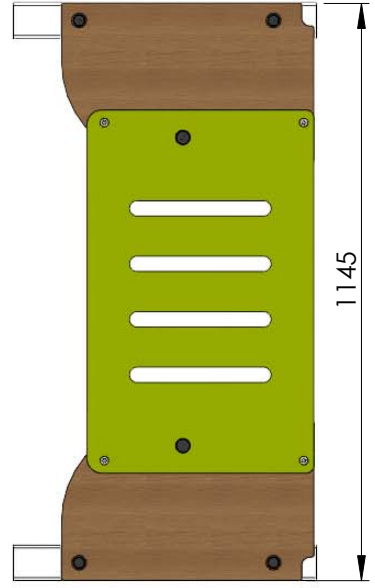
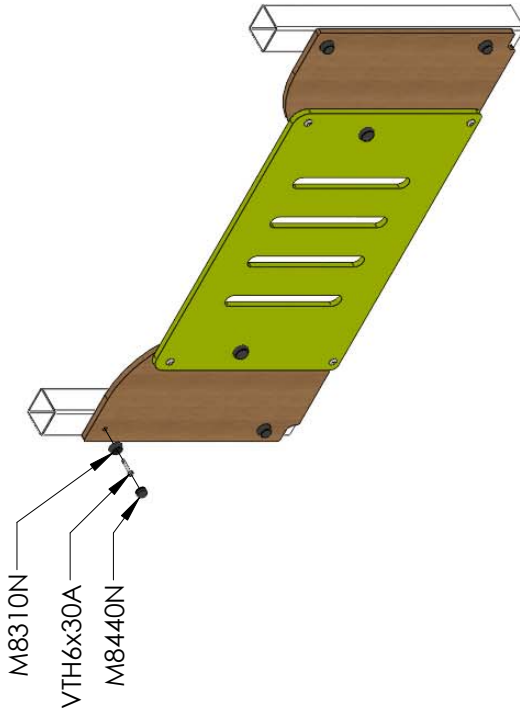
- M8310N
- VTH6x30A
- M8440N
- M8310N
- VTH6x30A
- M8440N



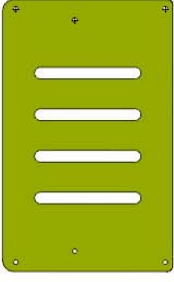
1



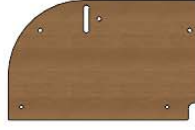
2



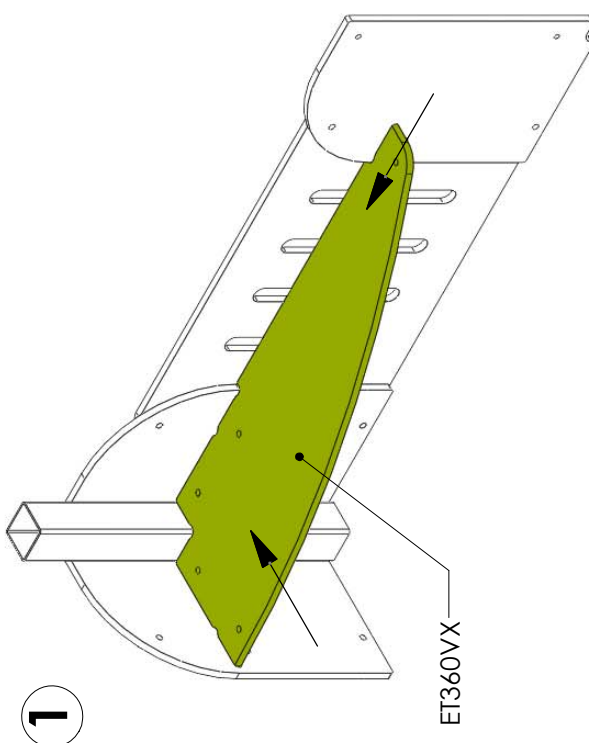
1x
ET352VX



2x
ET353CH



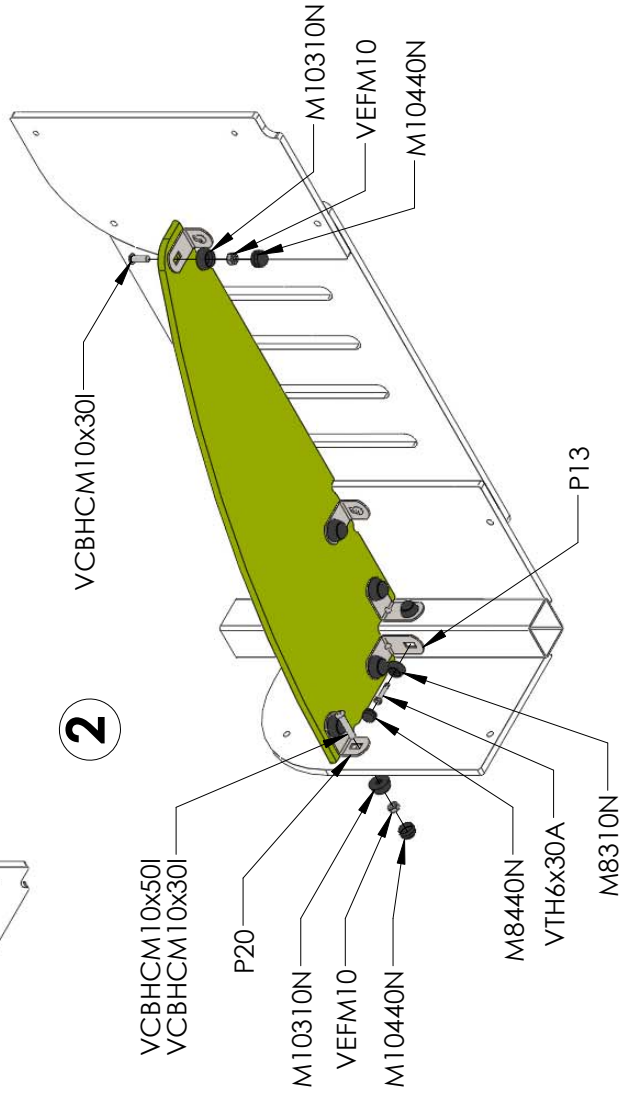
Réf	Qté
ET352VX	1
ET353CH	2
M8310N	4
M8440N	4
M10310N	6
M10440N	6
VCBHC M10x40I	6
VEFM10	6
VTH6x30A	4



1

ET360VX

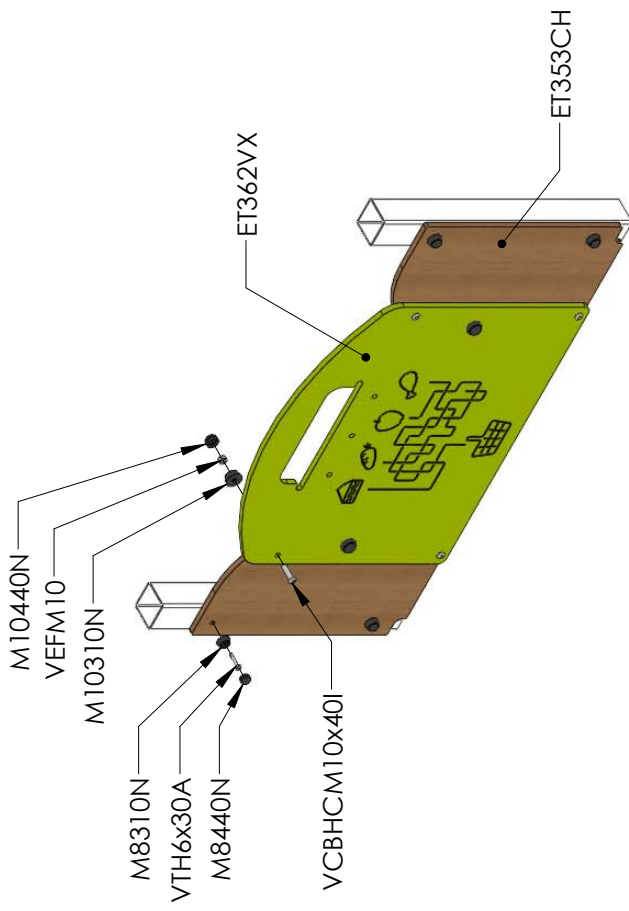
1x
ET360VX



2

Réf	Qté
ET360VX	1
M8310N	2
M8440N	2
M10310N	8
M10440N	8
P13	2
P20	3
VCBHC M10x30I	5
VCBHC M10x50I	3
VEFM10	8
VTH6x30A	2

1



1x
ET362VX

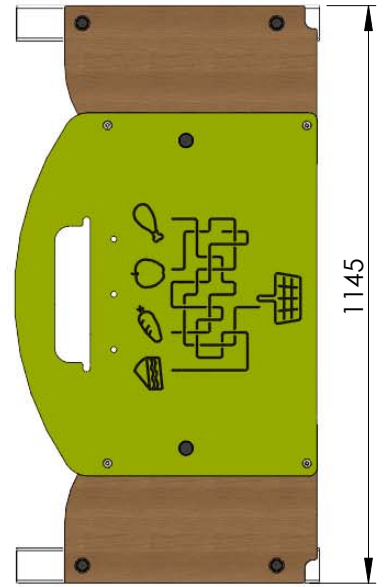
2x
ET353CH

1x
ET363CH

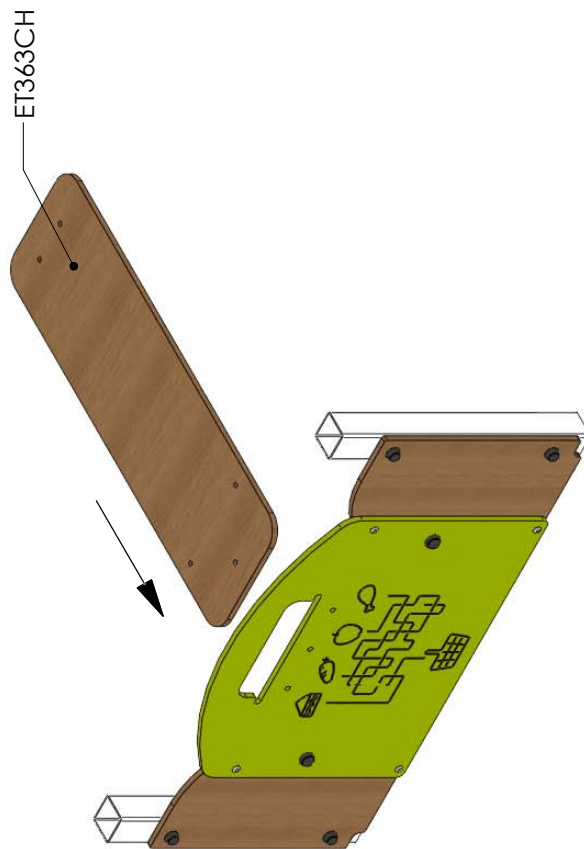
3x
P13



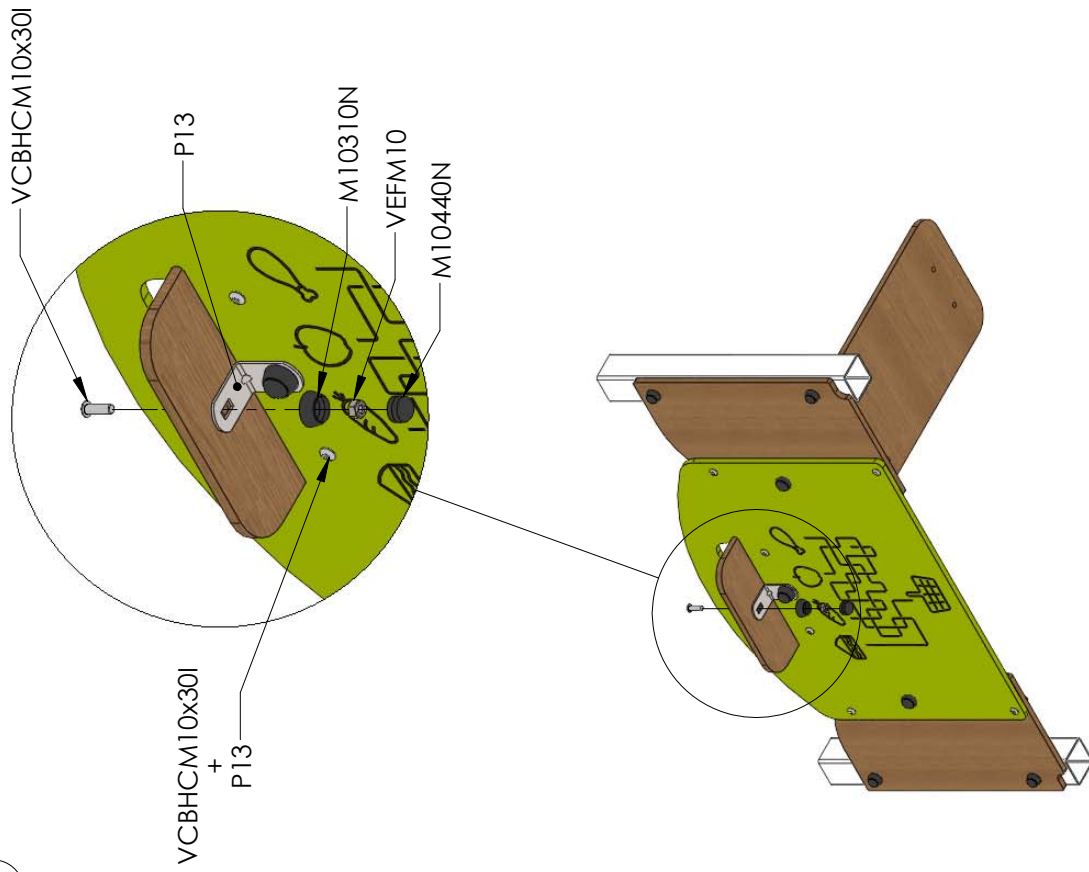
Réf	Qté
ET353CH	2
ET362VX	1
ET363CH	1
M8310N	4
M8440N	4
M10310N	12
M10440N	12
P13	3
VCBHCM10x30I	6
VCBHCM10x40I	6
VEFM10	12
VTH6x30A	4



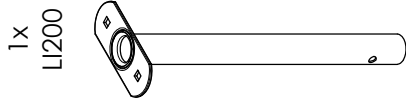
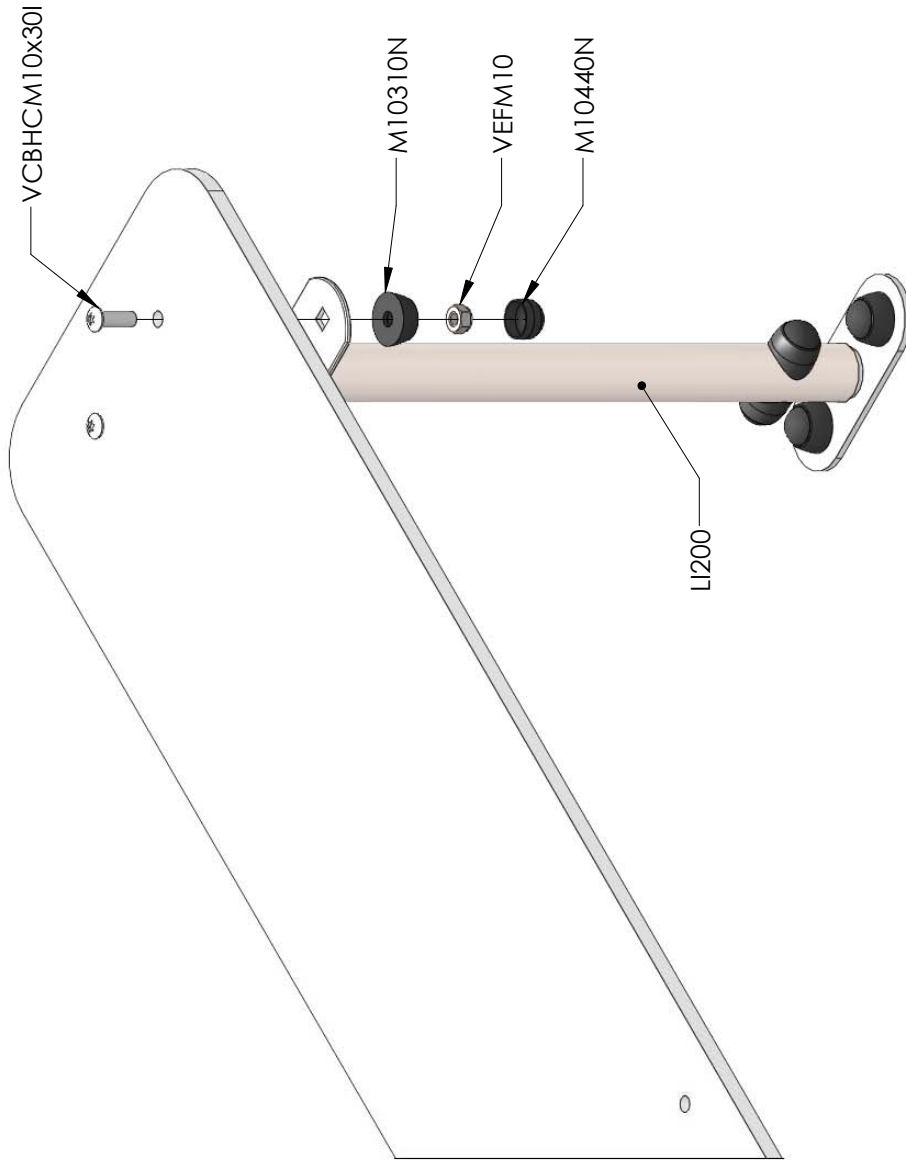
2



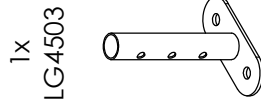
3



1



1x
LI200



1x
LG4503

Réf	Qté
LG4503	1
LI200	1
M10310N	4
M10440N	6
M12503N	2
RD14M10	2
VCBHCM10x30I	2
VEFM10	3
VTH10x60	1